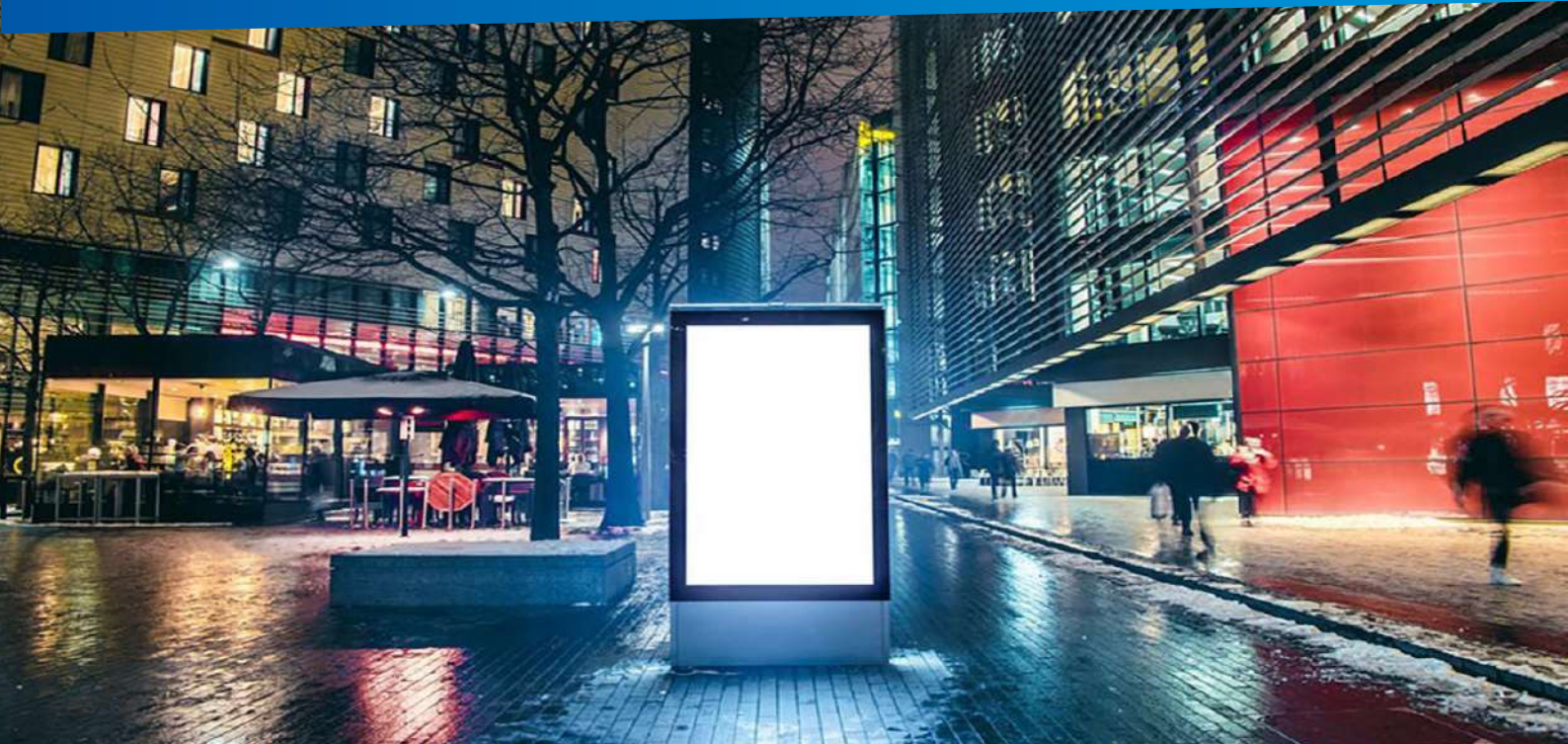


RelaySmartOne

The remotely controlled relay that supports you in your energy sobriety approach



- ❖ To meet the requirements of the energy resilience law of August 22, 2021 which requires the extinction of advertisements and illuminated signs during the night;
- ❖ To reduce your electricity consumption by remotely controlling the lighting in your public or professional buildings;
- ❖ To remotely control your industrial machines, electric motors, gates, heating, ventilation, air conditioning systems, etc...

LTE-M  NB-IoT 



Optimal communication on 4G / LTE-M and Nb-IoT mobile networks



Programmable remotely from the 2I.Factory supervision platform and a mobile application



Small in size to fit easily into panels and machines



Power supply: alternating or direct current



Connected

Orange label certifying proper operation and performance on Orange's LTE-M network

Remote power management of lightning and industrial equipment

ON/OFF management of AC or DC power supply to any electrical equipment
Periodic programming by hour, day or week
Programming of 18 different time slots
Power outage alert
Periodic status feedback by Keep Alive

Technical characteristics

User Interface (HMI)	LED and button / API Integration with the 2I.Factory platform Mobile application
Network connectivity	LTE-M / Nb IoT
Communication Protocol	MQTT / MQTTS
Power supply	From 85 to 305 V AC. or from 70 to 430 V . DC.
Software update	FOTA (Firmware Over the Air)
Maximum amperage	16 A
Dimensions & weight	Standard version 8,7 cm x 6 cm x 5,3 cm - 150 gr Reduced version 8,7 cm x 6 cm x 3,5 cm - 110 gr
Protection Index (IP)	Interior casing : IP30
Temperature	-40°C / +85°C
Mounting	Rail DIN rail, Screw